

stylish, energy efficient,
sustainable electric heating
solution with **smart**, app
enabled control



completely changing the way we heat ourselves

Herschel is far infrared heating



Herschel is without doubt the future of heating. Energy efficient, highly controllable, stylish and discrete, comfortable and sustainable heating when you want it, where you want it.

Easy to install, no maintenance and easy to control. Herschel Far Infrared heaters have zero light and silent operation with no fumes. Combines with solar to give FREE heating and zero CO².



why Herschel?

Herschel is the UK market leader of far infrared heating with operations and distributors in over 15 countries.

We are highly passionate about far infrared and our heaters, all of which are made to the highest standards* and approved to global testing requirements.

All our installers and distributors are fully trained so when you buy Herschel you can be sure you are getting the best heaters and the best advice.

Herschel heaters are great for any construction and any age of property.

We have panels to suit any requirement from full house installations, extensions, conservatories and outdoor heating.

Stay comfortably warm with Herschel.

*Herschel panels are fully certified by the leading German Testing laboratory (TÜV) to GS Standards, with SAA Approval for Australia and New Zealand and are RoHS Compliant.

how it works

what is Far Infrared heat?

Far Infrared is radiant heat, it's the same feeling of warmth as the winter sun on your face and the heat from a coal fire. It is even the same form of heat emitted by your own body.

Far infrared heating works on the basis of long-wave infrared which, instead of heating air, directly and gently heats objects, the thermal mass of the building and people.

**IF BUILDINGS
COULD DECIDE,
THEY WOULD
CHOOSE HERSCHEL
FAR INFRARED**

It is the most basic form of heating known to man. Used by cavemen to heat themselves by fires, by Romans in their hypocausts, by log burners and tile stoves. Favoured for millennia because it heats objects, which then radiate back and keep the environment warm around you. Radiant heat does not heat air – which holds little heat and disappears. Traditional heating focuses on employing convection heaters to heat large volumes of air.

Today, new technology, in the form of our 100% energy efficient, zero light Herschel Far Infrared heating,

is allowing us to use radiant heating once more in a stylish, comfortable and highly controllable way. It is 100% **safe and natural** (it's UV that is harmful, not infrared).



Delivers up to 60% savings on energy usage over traditional forms of electric heating.



the future is electric

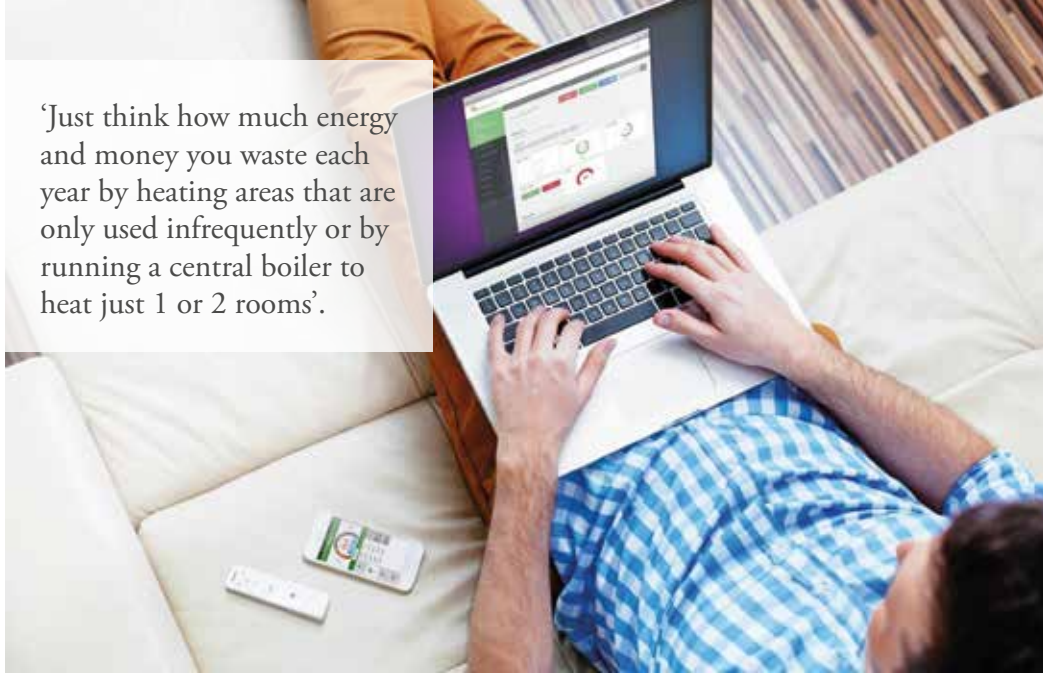
In the future fossil fuels will be a thing of the past and **efficient electric heating** will be the standard way we heat ourselves. Herschel is a low energy heating solution that, when used with electricity generated by either solar, wind power or other renewable source, is **100% CO² free**.

Our heaters can be linked to solar to provide free heating. As solar battery storage develops the Herschel fit with solar will become increasingly relevant. A typical 4kW Solar PV system combined with Herschel and battery storage could cover the annual heating requirements of the average house in the UK.



THE ENERGY AWARDS 15 FINALIST

‘Just think how much energy and money you waste each year by heating areas that are only used infrequently or by running a central boiler to heat just 1 or 2 rooms’.



control

make your property smart, warm and energy efficient

Herschel heaters can just be plugged in, however, to regulate temperature and manage optimum comfort levels and efficiencies simply add controllers.

Our Herschel iQ system and controllers use the latest wireless technology to turn your new Herschel infrared heaters into a **cutting edge, smart, energy-saving heating system**. No-one else offers this winning combination of our stylish and efficient heaters with such a comprehensive, flexible and cost effective control system.

Effective zoning is achieved by only heating the areas you want heated, when you want them heated. There is no central boiler or heat pump with Herschel heaters, so each panel can be controlled completely independently; energy is only used when a Herschel panel is on.

With Herschel iQ you can have 100% control of your heating remotely via your APP, from anywhere in the world – all you need is 3G or WiFi. This control is ideal for returning from holidays or weekends away (you never have to return to a cold home again) or pre-heating your holiday home.

our heaters



‘The most energy efficient and lowest maintenance systems available’.

Image shows Inspire Picture.

Herschel panels

Our stylish, ultra-slimline panel heaters are specially designed for heating rooms.

Most of our panels can be discretely wall-mounted, or ceiling-mounted for that extra space saving opportunity.

We offer a variety of designs from white to glass, mirrors, and even bespoke pictures to fit with, and enhance, your decor.

Choose and combine from our extensive range of designs all of which are suitable for:

- any property type and age, from an apartment to barn conversions
- new builds and retrofits / replacement systems
- bedrooms, living areas, bathrooms, conservatories, extensions, hallways, any application
- different budgets

Choose from Inspire, our premium range from Germany, the Select XL, our new performance range and popular Select, our standard range.

Panel ranges	Select	Select XL	Inspire
Wall and ceiling	✓	✓	✓
White finish	✓	✓	✓
Insulated		✓	✓
Frameless		✓	✓
Aluminium construction		✓	✓
Easyfix mounting		✓	
Glass	✓		✓
Mirror	✓		✓
Picture			✓
10 year warranty	*	*	✓

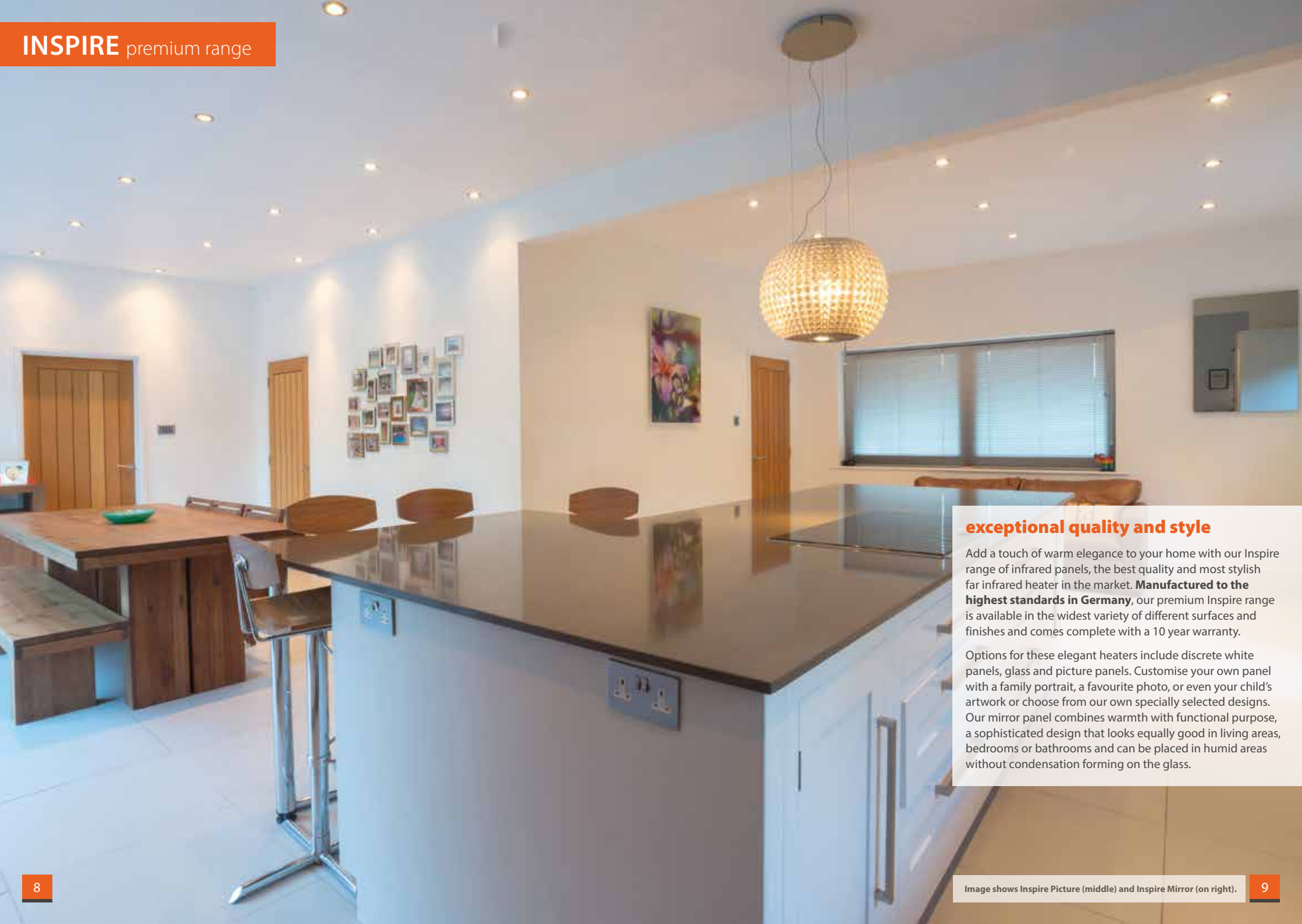
*Select and Select XL both come with 5 year warranty

Herschel Aspect XL: enjoy the gentle feeling of the sun even after it's set.

Our Aspect range is the most attractive outdoor heater on the market, perfect for covered or semi-covered outdoor areas.

Herschel Pulsar

Our Pulsar is our striking, ceiling-mounted far infrared heater specially designed for conservatories and areas with high ceilings.



exceptional quality and style

Add a touch of warm elegance to your home with our Inspire range of infrared panels, the best quality and most stylish far infrared heater in the market. **Manufactured to the highest standards in Germany**, our premium Inspire range is available in the widest variety of different surfaces and finishes and comes complete with a 10 year warranty.

Options for these elegant heaters include discrete white panels, glass and picture panels. Customise your own panel with a family portrait, a favourite photo, or even your child's artwork or choose from our own specially selected designs. Our mirror panel combines warmth with functional purpose, a sophisticated design that looks equally good in living areas, bedrooms or bathrooms and can be placed in humid areas without condensation forming on the glass.

**the Performance range
from Herschel**

Brand new for 2016, the innovative frameless Select XL is our performance panel which employs our newly developed COSIX Cell heating element to bring you greater efficiency, up to 10% more effective than competitor products.

Easy to install with Herschel's unique Easy-Fix mounting system, sleek and stylish with its frameless and ultra-slim design as well as offering maximum performance. The Select XL white panel is aluminium and offers an unbeatable combination of efficiency, quality and price and comes with a 5 year warranty.

Ideal for ceiling or wall-mounting, the all new Select XL is set to become one of the biggest selling heaters in Europe.



“The panels have been installed for over a month now and are simply wonderful. Quiet, is the best thing about them, no more noise from creaking water pipes and radiators! The electrician was so impressed that he might even buy some himself”.

Alan and Clare Wenham

“We have a Glass Mirror panel and a white panel. We are very impressed so far with, one the look of both panels, and two the heat generation”.

Trevor and Sue Vallance



true affordable value

Our Select range offers a selection of frameless finishes including mirror, glass and our popular towel heater which is perfect for heating bathrooms.

We also offer a standard white framed panel, in 3 sizes with the option to wall or ceiling mount if preferred, for those wishing to reap all the benefits of far infrared heating from a lower cost solution. Ideal for bedrooms. All Select panels come complete with a 5 year warranty.



the gentle feeling of the sun even after it's set

The Herschel Aspect range of outdoor heaters uses far infrared to gently heat people and create comfortable warmth similar to the feeling of winter sun.

They emit no unsightly light or noise, require

no maintenance and are built to last allowing people to enjoy staying warm outside without feeling too hot. The most attractive outdoor heater on the market, the Aspect XL has a contemporary design that combines style with the latest in far infrared technology. The Aspect XL is only suitable for use under covered, sheltered areas including balconies, patio areas and even conservatories.

Using a groundbreaking design of specially developed convex emitters for enhanced efficiency the Aspect XL technology is unique to Herschel. It can be used as a stylish indoor heater too where appropriate ceiling height is specified.

The Aspect XL comes complete with a 5 year warranty.



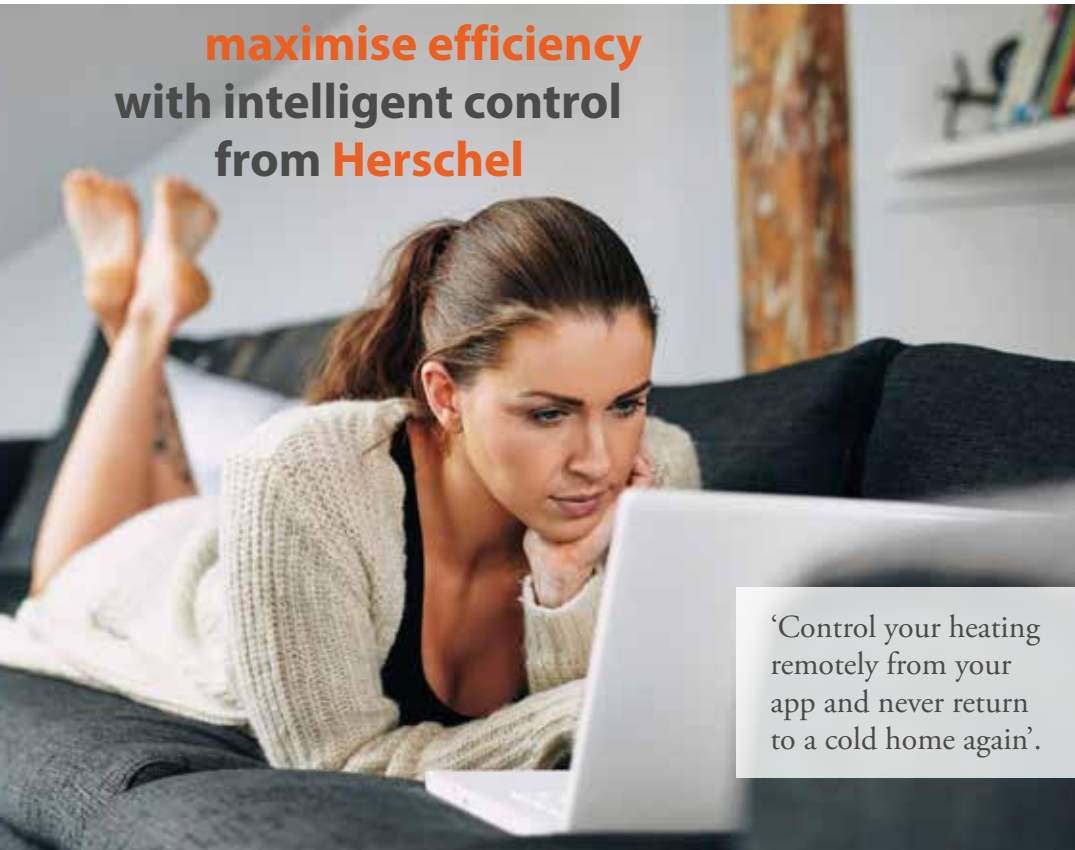
a touch of class with Pulsar

Our designer space heater is perfect for areas with high ceilings and for those homeowners looking to be the talking point of their friends. Its striking appearance combines with unbeatable heat efficiency, achievable from the perfect radiant properties of its distinctive design.

The Pulsar is the right solution for you if you have a spacious, high ceiling area and are looking to achieve a low energy, comfortable heating solution. Enjoy the full benefits that Herschel far infrared technology has to offer; an easy to install, energy efficient, highly controllable, silent operation and no maintenance solution that is changing the way we heat ourselves.

The Pulsar comes complete with a 5 year warranty.

maximise efficiency with intelligent control from Herschel



‘Control your heating remotely from your app and never return to a cold home again’.



When properly controlled, far infrared heaters can reduce energy consumption by up to 60% compared with traditional forms of heating.

Herschel iQ is a heat control system delivering precise, modern control of your heating:

- easy to setup
- user-friendly
- optimum comfort
- energy and cost savings
- easily extendable to control other systems including lighting and security to create a truly smart and energy efficient home.

See our website www.herschel-infrared.com for full details of Herschel iQ.

■ **Central control unit** – at the heart of your smart system, this unit communicates with your devices and radiators via a secure wireless protocol.

■ **Room thermostat** – install it, set it, use it to maintain your ideal room temperature.

■ Download the **iQ App** for free from iTunes App store or Google Play and control your iQ devices from anywhere, even when you are away from home. Perfect for making sure your home is warm on the return from holiday. Alternatively, the **remote control** can be used to automate your heaters.

■ We also offer a selection of thermostats for stand-alone use.

what size panel do I need?

Room Heating

Herschel heaters heat the fabric of the building, not air, which can retain heat much longer. This can mean 2-3 days of the heaters being fully on at the start of the winter season to heat the ‘thermal mass’ of the room. After that, the thermal mass just needs ‘topping up’. The power (wattage) of the heater needed averages 25wm³ but will depend upon the construction type and insulation levels. Better insulated rooms will need less power. This compares to an average of 40-45wm³ for convection heating.

Examples of Herschel power requirements are shown below.

Watts per mtr cubed	Insulation levels	
7wm ³	Passive house	Completely airtight modern
20wm ³	New Build	Standard new build
25wm ³	Modern building	1950's onwards
30wm ³	Old building	Pre-1950's non cavity wall

Space heating – large areas and outdoors

Far infrared can directly heat people in the areas where they need to be heated so heaters can be mounted only in those areas. With convection heating the air cannot be contained, the whole area needs to be heated, which is much more expensive.

Aspect XL2 (XL3) heats a 9m² (12m²) zone indoors and 6m² (9m²) outdoors.

The Pulsar 1800 watts (2400 watts) can heat 15m² (20m²) respectively.

Our Technical Advisors are available to help with specification requirements*.

*Note, specification depends upon the construction of the building, insulation levels etc.

‘Heats the fabric of the building, not air’.

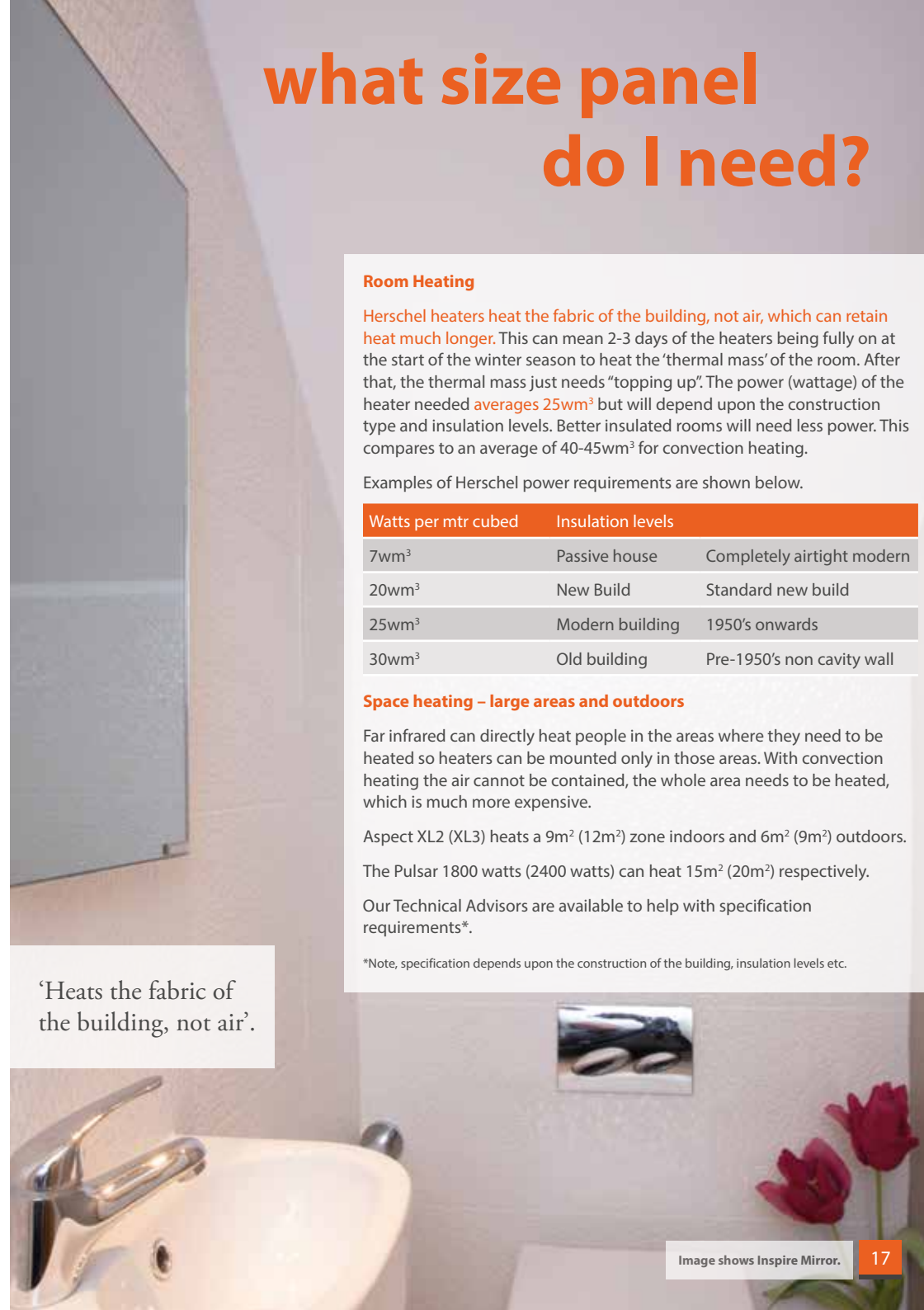


Image shows Inspire Mirror.



Select XL



Inspire Picture

Inspire Mirror

panel heating range

panel heating range

MODEL	DESCRIPTION	POWER	DIMENSIONS (cm)	WEIGHT (kg)	HEATED AREA (m ²)
INSPIRE WHITE ALUMINIUM PANEL - frameless					
CL-200	Herschel Inspire White 250W	250 W	60 x 30 cm	4 kg	3-5
CL-300	Herschel Inspire White 350W	350 W	90 x 30 cm	5 kg	4-7
CL-400	Herschel Inspire White 420W	420 W	60 x 60 cm	6 kg	5-8
CL-500	Herschel Inspire White 550W	550 W	80 x 60 cm	8 kg	7-12
CL-750	Herschel Inspire White 750W	750 W	90 x 70 cm	10 kg	11-18
CL-750L	Herschel Inspire White 820W Long	820 W	170 x 40 cm	10 kg	11-18
CL-900	Herschel Inspire White 900W	900 W	100 x 80 cm	12 kg	13-22
CL-1200	Herschel Inspire White 1200W	1200 W	120 x 80 cm	15 kg	17-29
CL-1200L	Herschel Inspire White 1250W Long	1250 W	160 x 60 cm	15 kg	17-29
INSPIRE MIRROR PANEL - frameless					
SH-200	Herschel Inspire Mirror 250W	250 W	60 x 30 cm	5 kg	3-5
SH-300	Herschel Inspire Mirror 350W	350 W	90 x 30 cm	7 kg	4-7
SH-400	Herschel Inspire Mirror 420W	420 W	60 x 60 cm	8 kg	5-8
SH-500	Herschel Inspire Mirror 550W	550 W	80 x 60 cm	12 kg	7-12
SH-750	Herschel Inspire Mirror 750W	750 W	90 x 70 cm	16 kg	11-18
SH-900	Herschel Inspire Mirror 900W	900 W	100 x 80 cm	20 kg	13-22
SH-1200L	Herschel Inspire Mirror 1250W Long	1250 W	160 x 60 cm	25 kg	17-29
INSPIRE PICTURE PANELS - made to order					
BH-200	Herschel Inspire Picture 250W	250 W	60 x 30 cm	4 kg	3-5
BH-300	Herschel Inspire Picture 350W	350 W	90 x 30 cm	6 kg	4-7
BH-400	Herschel Inspire Picture 420W	420 W	60 x 60 cm	8 kg	5-8
BH-500	Herschel Inspire Picture 550W	550 W	80 x 60 cm	10 kg	7-12
BH-750	Herschel Inspire Picture 750W	750 W	90 x 70 cm	13 kg	11-18
BH-900	Herschel Inspire Picture 900W	900 W	100 x 80 cm	16 kg	13-22
BH-1200	Herschel Inspire Picture 1200W	1200 W	120 x 80 cm	20 kg	17-29
INSPIRE GLASS PANEL - frameless in white, black, pastel green (specify colour at point of order)					
GH-300	Herschel Inspire Glass 350W	350 W	90 x 30 cm	8 kg	4-7
GH-500	Herschel Inspire Glass 550W	550 W	80 x 60 cm	12 kg	7-12
GH-750	Herschel Inspire Glass 750W	750 W	90 x 70 cm	16 kg	11-18
GH-900	Herschel Inspire Glass 900W	900 W	100 x 80 cm	20 kg	13-22
SG-500	Herschel Inspire Structured Glass 550W	550 W	80 x 60 cm	12 kg	7-12
SG-750	Herschel Inspire Structured Glass 750W	750 W	90 x 70 cm	16 kg	11-18

With 10 year warranty.



MODEL	DESCRIPTION	POWER	DIMENSIONS (cm)	WEIGHT (kg)	HEATED AREA (m ²)
SELECT WHITE PANEL - with frame					
HS350-W	Herschel Select White 350W - with Frame	350 W	59.5 x 59.5 x 2.5 cm	3 kg	6-8
HS540-W	Herschel Select White 540W - with Frame	540 W	90 x 60 x 2.5 cm	5 kg	9-12
HS700-W	Herschel Select White 700W - with Frame	700 W	119.5 x 59.5 x 2.5 cm	8 kg	13-15
SELECT XL HIGH PERFORMANCE WHITE ALUMINIUM - frameless					
XL-HS250-W	Herschel Select XL White 250W - Frameless	250 W	30 x 90 x 2.5 cm	5 kg	4-6
XL-HS300-W	Herschel Select XL White 300W - Frameless	300 W	59.5 x 59.5 x 2.5 cm	6 kg	5-7
XL-HS600-W	Herschel Select XL White 600W - Frameless	600 W	100 x 65 x 2.5 cm	11 kg	11-13
XL-HS850-W	Herschel Select XL White 850W - Frameless (ceiling only)	850 W	120 x 85 x 2.5 cm	16 kg	19-21
XL-HS1000-W	Herschel Select XL White 1000W - Frameless (wall only)	1000 W	120 x 85 x 2.5 cm	16 kg	19-21
SELECT GLASS PANEL - frameless					
HS600-GW	Herschel Select Glass White 600W - Frameless	600 W	60 x 90 x 2.5 cm	9 kg	9-15
HS800-GW	Herschel Select Glass White 800W - Frameless	800 W	60 x 120 x 2.5 cm	14 kg	12-19

Glass panels and Select XL 1000w wall mounting only, all other panels can be ceiling or wall mounted. With 5 year warranty.



space heating range

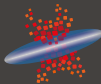
MODEL	DESCRIPTION	POWER	DIMENSIONS (cm)	WEIGHT (kg)	HEATED ZONE INDOORS (m ²)	HEATED ZONE OUTDOORS (m ²)
ZERO LIGHT HEATERS FOR LARGE AREAS AND ZONED HEATING						
IRXL2-1300	Herschel Aspect XL2 1300W	1300 W	55 x 10 x 14 cm	3.4 kg	9	6
IRXL3-1950	Herschel Aspect XL3 1950W	1950 W	80 x 10 x 14 cm	4.4 kg	12	9
CE						
IRPULSAR-2400B	Herschel Pulsar IR 2400W Black	2400 W	30 x 38 x 80 cm	28 kg	20	N/A
IRPULSAR-1800W	Herschel Pulsar IR 1800W White	1800 W	30 x 38 x 80 cm	28 kg	15	N/A

Installed ceramic heaters are UL recognised (file no. E214574)

With 5 year warranty.



Image shows Select Glass white.



HERSCHEL[®]
the future of heating – today

For further information contact:
email: help@theecostore.co.uk
www.theecostore.co.uk
Phone: 0208 819 9153

Distributed by:



All information in this brochure is accurate at the time of printing.